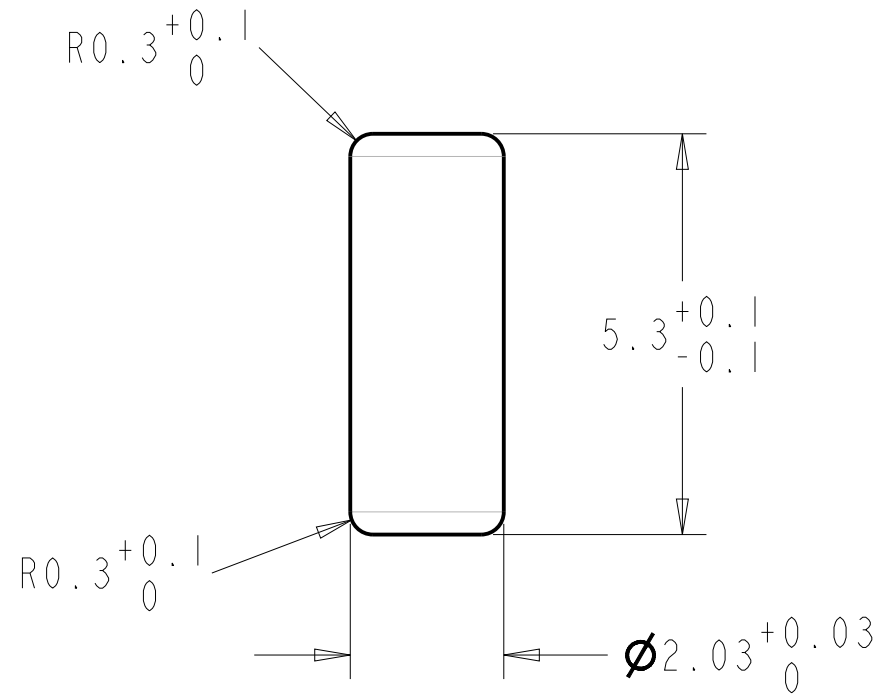
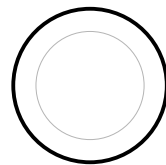


REVISION	BY	DATE	APPD BY	DATE	PCN #	DESCRIPTION
I	C.B.	26/10/20	--	--		Changed diameter from Ø2h7 to 2.03(+0.03/0)



DRAWING FOR
QUOTATION ONLY

DRAWING FOR
PROCESSING



				CONFIDENTIAL - This document and all information contained herein is the property of Stanley Black & Decker and may not be disclosed to unauthorized persons or reproduced by any means, or used for any purpose other than that submitted without express written permission from Stanley Black & Decker.				
				<div> <div> Tolerances: (except as noted) 0-6 = ± 0.1 6-30 = ± 0.2 30-120 = ± 0.3 120-315 = ± 0.5 315-1000 = ± 0.8 </div> <div> Drawn by: Designer </div> <div> Date: 26/10/20 </div> <div> Appd By: Approver </div> <div> Date: date </div> <div> Scale (except as noted) 10.000 </div> <div> </div> </div>				
Material: 45 S 20 Pb				Hardness: HV = 400-500.		Finish: Finish		
Lifecycle State:				Title: PIN (Goupille d'inverseur)				
Part Number:				Drawing Number: R151-08D_IND1		Size: A4	Revision: 1	Sheet: 1 OF 1

© : CRITICAL DIMENSION